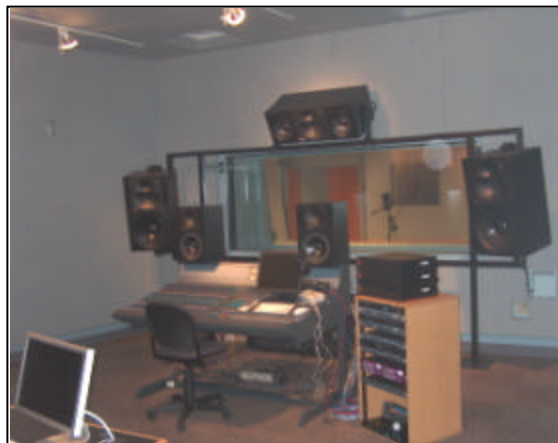


## Description: **KTSU-FM**

In its strategic goal of modernizing its campus for the 21<sup>st</sup> century, Texas Southern University has provided KTSU-FM a leading technology physical plant. KTSU-FM is a Non-Commercial radio station providing jazz, gospel, and talk programming. Housed in the Tavis Smiley School of Communications, are nine state of the art broadcast studios and a central terminal room accommodating the music, talk, news, and production requirements. Provided in the facility is the capability for future Web and IBOC broadcasting.

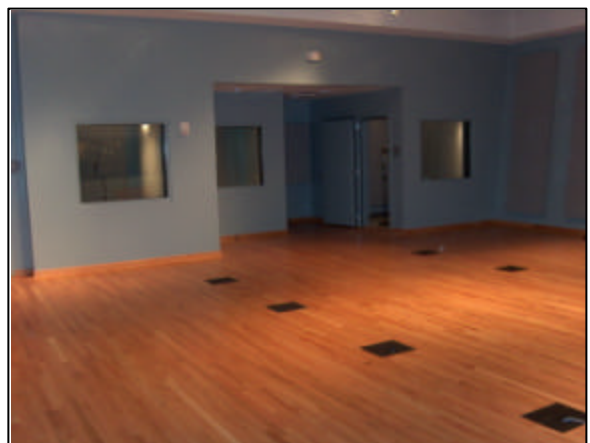
The entire facility is built on the platform of a virtual studio complex. All program material is handled in a digital format with storage, processing, and distribution located in the central terminal room. Operation in each of the studios is by means of remote control terminals and touch screen user interfaces. Full redundancy of all studios is available in any of the studios by simple software delegation. All program content files are redundantly located on multiple servers to insure uninterrupted programming.

To match the electronic signal quality of the broadcast plant extreme attention was applied to the physical acoustics of the broadcast plant. A "Box within Box" design was utilized to achieve isolation to eliminate audio intrusion from adjoining spaces. HVAC systems were designed to provide required environmental control while minimizing ambient noise.



Adjoining the Broadcast facility in a physically isolated building is the home of the new KTSU Recording Studio. The charge during the design phase was to build "the finest recording facility in the city" to record jazz and gospel material. This charge was realized by starting from a blank screen and building the space in modeling software to meet the desired acoustic performance. The space provided allows for small to large ensemble and medium sized choir recording in a warm even response environment. A unique feature of the design allows for a live return sound to the performers while maintaining articulate recording.

## Broadcast and Recording Facility



Another feature of the plant is its hybrid analogue/digital LEDE control room. The Recording Control Room features dual mixing positions for the two formats. Depending on the nature of the recording and the desire of the producers, tracking and mastering may be performed in either environment. The 5.1 monitoring system has been optimized for both mix positions insuring faithful monitoring in either format.